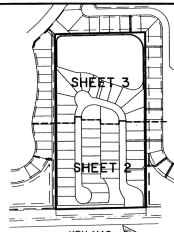


BOCA RESERVE PUD

LYING IN SECTION 27, TOWNSHIP 47 SOUTH, RANGE 41 EAST, BEING A REPLAT OF A PORTION OF TRACT 3, FLORIDA FRUIT LANDS COMPANY'S SUBDIVISION NO. 2 AS RECORDED IN PLAT BOOK 1, PAGE 102, PUBLIC RECORDS OF PALM BEACH COUNTY, FLORIDA.

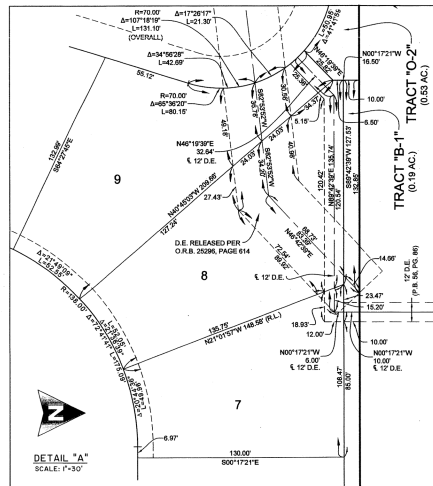
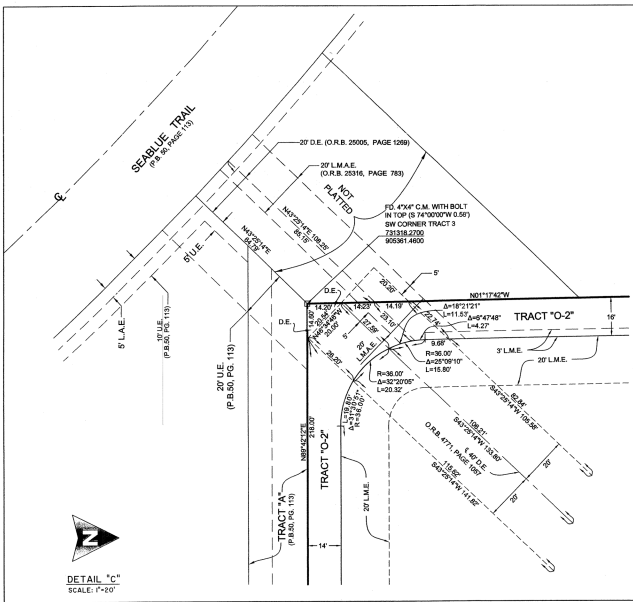
SHEET 4 OF 4

APRIL, 2012



201

COUNTY OF PALM BEACH	SS
STATE OF FLORIDA	SS
THIS PLAT WAS FILED FOR RECORD AT	DAY OF
M. THIS	SITE AND DATE
RECORDED IN PLAT BOOK NO.	THRU
ON PAGE	
SHARON R. BOCK,	PLANNING
CLERK AND COMPTROLLER	
BY:	D.C.



COORDINATE NOTE:
STATE PLANE COORDINATES SHOWN ARE GRID DATUM, NAD 83 1990
ADJUSTMENT, FLORIDA EAST ZONE, COORDINATE SYSTEM 1983 STATE
PLANE, TRANSVERSE MERCATOR PROJECTION
LINEAR UNIT = US SURVEY FEET
ALL DISTANCES ARE GROUND
SCALE FACTOR = 1.0001137
GROUND DISTANCE X SCALE FACTOR = GRID DISTANCE
S 01°15'15" E PLAT BEARING, 00°11'00" COUNTERCLOCKWISE ROTATION
PLAT TO GRID
THE EAST LINE OF SECTION 27, TOWNSHIP 47 SOUTH, RANGE 41 EAST.



MICHAEL B. SCHORAH & ASSOCIATES, INC.
1980 FOREST HILL BLVD., SUITE 206
WEST PALM BEACH, FLORIDA 33409
EDM 2439 TEL. (561) 998-0080 FAX. (561) 942-9728 LHM 2438

BOCA RESERVE PUD
A PLANNED UNIT DEVELOPMENT